



Cape Cod National Seashore

“The finest victory ever recorded for the cause of conservation in New England.” -*The Berkshire Eagle*



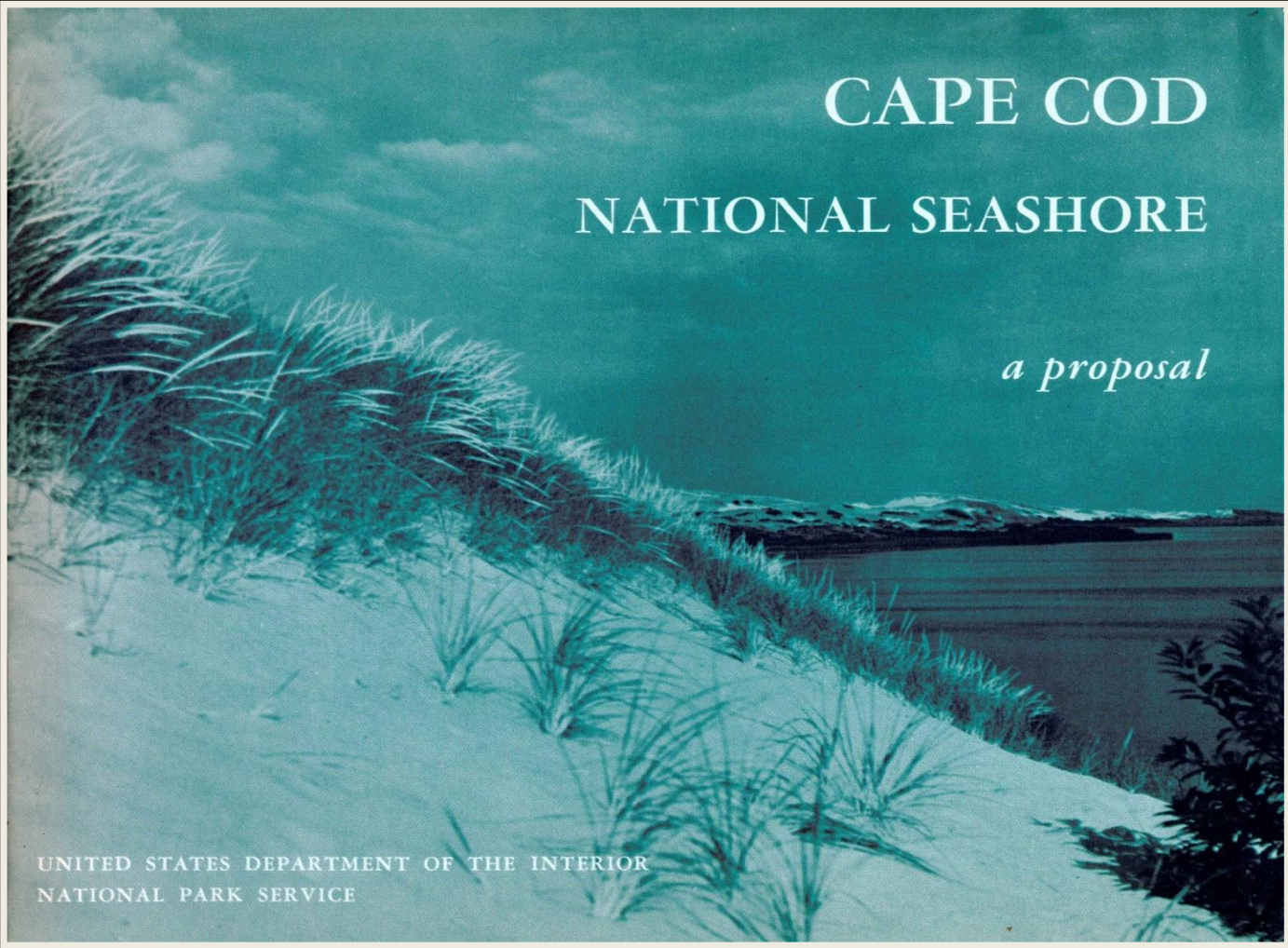
January 19, 2017

George Price
Superintendent



Cape Cod National Seashore: Timeline



The photograph shows a coastal landscape. In the foreground, there are sand dunes with clumps of tall, thin beach grass. A path or dune ridge leads from the bottom left towards the center. In the background, there is a body of water, likely a bay or harbor, with a small boat visible. The sky is filled with soft, white clouds. The overall color palette is muted, with a lot of greens, browns, and greys.

CAPE COD NATIONAL SEASHORE

a proposal

UNITED STATES DEPARTMENT OF THE INTERIOR
NATIONAL PARK SERVICE



Land Area

Approx. 44,000 acres

- **27,000 upland**
- **17,000 water**

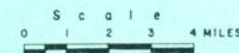
Land Ownership

- **NPS: 27,000 acres upland & submerged lands**
- **Towns: 2600 acres**
- **Private: 1500+ acres in 600 properties**
- State: 11,930 acres of submerged lands
- Remaining acreage: Misc. Federal (FAA, etc.)

Upland Acreage by Town

Town	Total Town Acreage	Acreage in CCNS	% of Town within CCNS
Chatham	15,560	750	4.79 %
Orleans	13,583	1,500	11.04 %
Eastham	10,140	3,000	29.59 %
Wellfleet	13,584	8,000	58.89 %
Truro	14,013	9,400	67.08 %
Provincetown	6,575	5,050	76.79 %

Provincetown has approx 1500 acres not in CCNS.







Resource and Visitor Protection Beach Safety:

Professional lifeguard staff maintains watchful eye over thousands of swimmers each day. Approximately two million beachgoers visited lifeguard-protected beaches during the summer of 2009.







Recent coastal change and inlet formation in Chatham resulted from long-term sediment movement. This inlet forms every 150 years (+-).



Cape Cod National Seashore
PMIS 191603

\$2 million net estimate

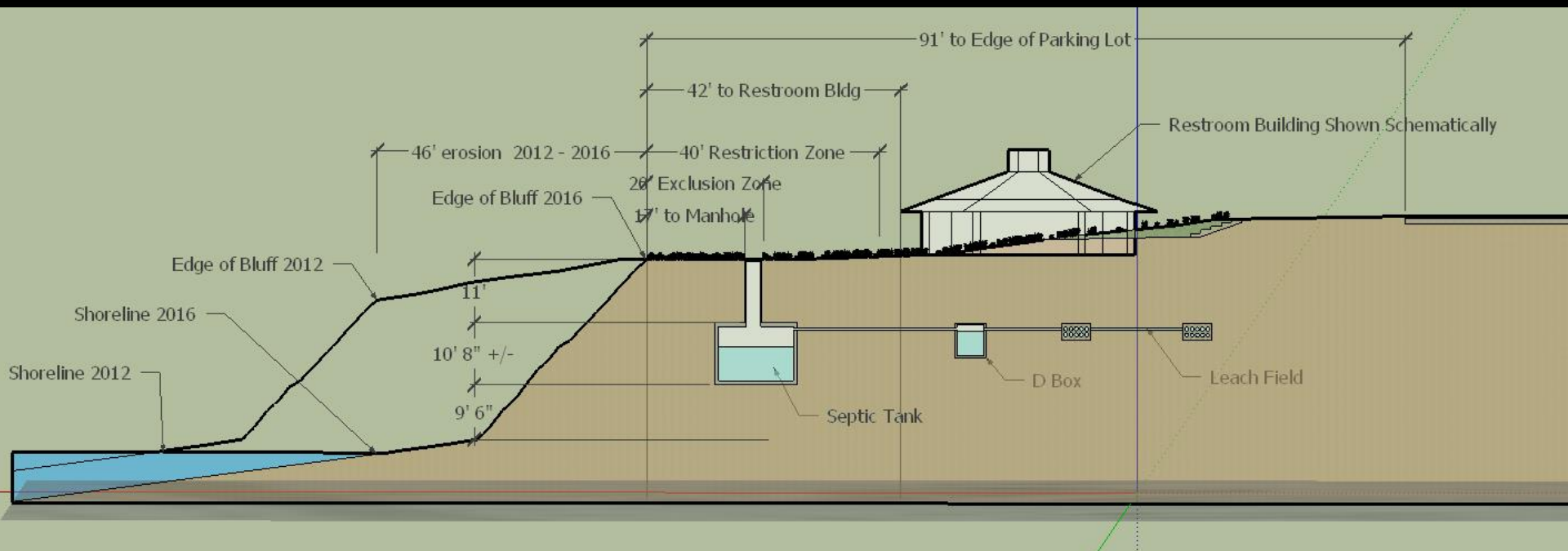
Remove and Rebuild Nauset Light Bathhouse and Parking Area
as coastal adaptation measure





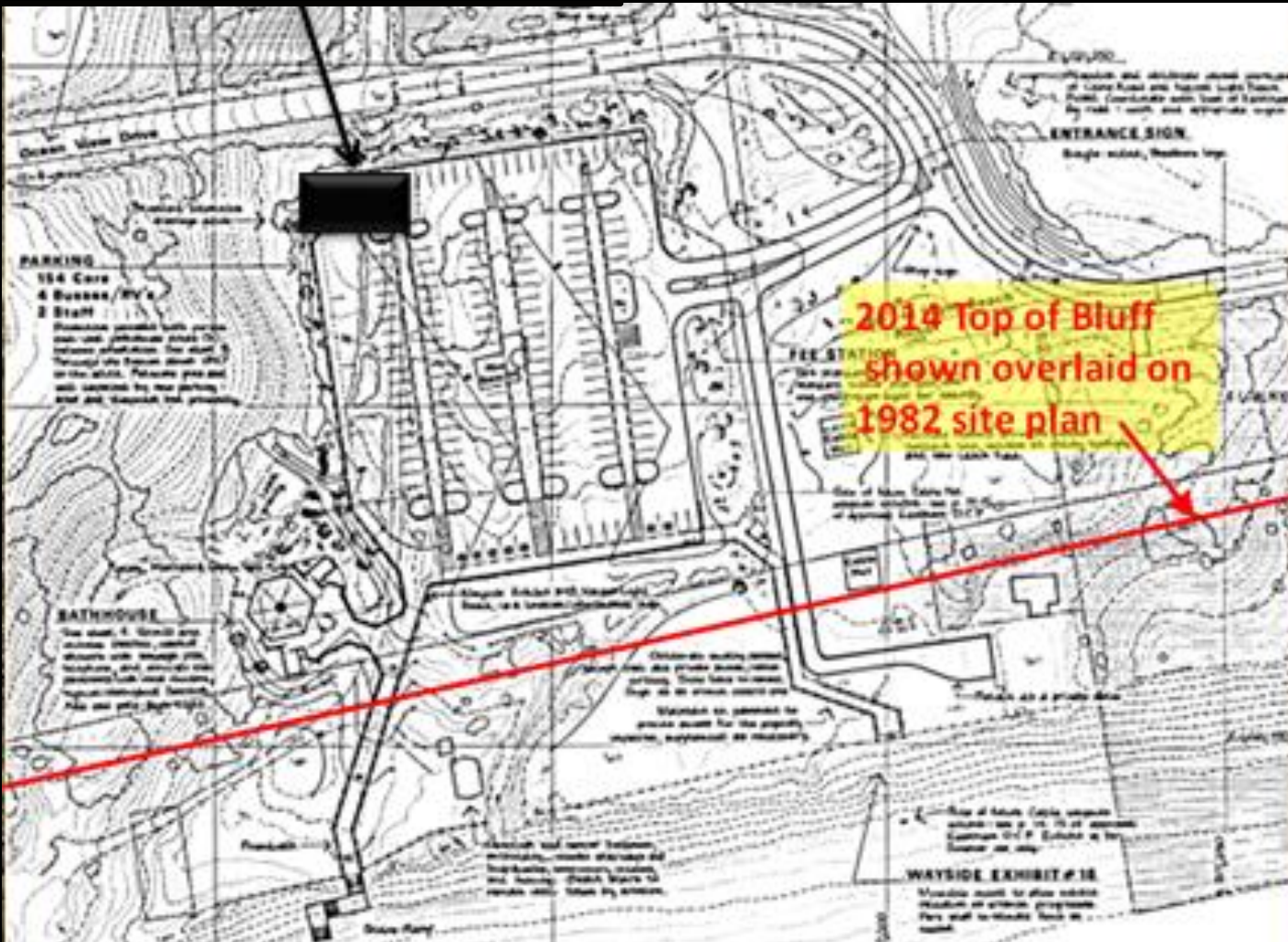


Cross-Section Showing Bathroom and Septic Tank





NEW FACILITY LOCATION







DESIGNER: K ZICK	SUB SHEET NO. L101	TITLE OF SHEET GENERAL SITE PLAN	DRAWING NO. 609 100709
TECH. REVIEW: Y LEE		REBUILD HERRING COVE BEACH FACILITY CAPE COD NATIONAL SEASHORE	PMIS/PMG NO. CACO 154244
DATE: 05/10/2012			SHEET 18 of 85

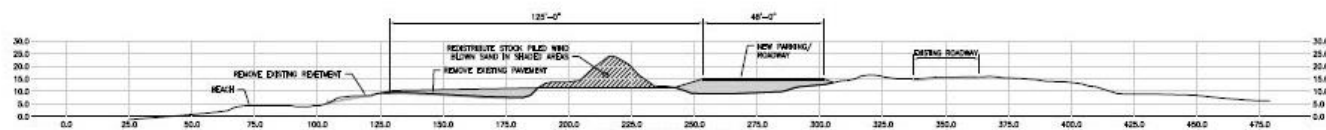




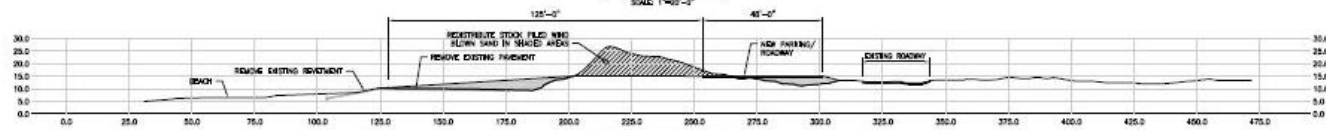




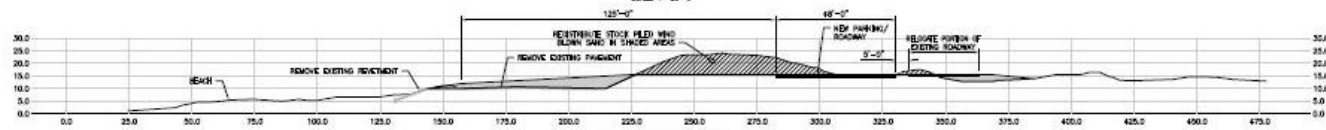
PROPOSED SITE PLAN
SCALE 1"=100'-0"



PROPOSED SECTION A-A
SCALE 1"=40'-0"



PROPOSED SECTION B-B
SCALE 1"=40'-0"



PROPOSED SECTION C-C
SCALE 1"=40'-0"

CHILDS ENGINEERING CORPORATION
24 MILLIS STREET, MILLIS, MASSACHUSETTS 01948 U.S.A.
TEL: 508/335-1100 FAX: 508/335-1101
E-MAIL: info@childseng.com

NO.	DATE	BY	CHKD	APP'D	REV.
1	4/26/13	DC	DC	DC	1
2	5/1/13	DC	DC	DC	2
3	5/1/13	DC	DC	DC	3
4	5/1/13	DC	DC	DC	4
5	5/1/13	DC	DC	DC	5
6	5/1/13	DC	DC	DC	6
7	5/1/13	DC	DC	DC	7
8	5/1/13	DC	DC	DC	8
9	5/1/13	DC	DC	DC	9
10	5/1/13	DC	DC	DC	10
11	5/1/13	DC	DC	DC	11
12	5/1/13	DC	DC	DC	12
13	5/1/13	DC	DC	DC	13
14	5/1/13	DC	DC	DC	14
15	5/1/13	DC	DC	DC	15
16	5/1/13	DC	DC	DC	16
17	5/1/13	DC	DC	DC	17
18	5/1/13	DC	DC	DC	18
19	5/1/13	DC	DC	DC	19
20	5/1/13	DC	DC	DC	20
21	5/1/13	DC	DC	DC	21
22	5/1/13	DC	DC	DC	22
23	5/1/13	DC	DC	DC	23
24	5/1/13	DC	DC	DC	24
25	5/1/13	DC	DC	DC	25
26	5/1/13	DC	DC	DC	26
27	5/1/13	DC	DC	DC	27
28	5/1/13	DC	DC	DC	28
29	5/1/13	DC	DC	DC	29
30	5/1/13	DC	DC	DC	30
31	5/1/13	DC	DC	DC	31
32	5/1/13	DC	DC	DC	32
33	5/1/13	DC	DC	DC	33
34	5/1/13	DC	DC	DC	34
35	5/1/13	DC	DC	DC	35
36	5/1/13	DC	DC	DC	36
37	5/1/13	DC	DC	DC	37
38	5/1/13	DC	DC	DC	38
39	5/1/13	DC	DC	DC	39
40	5/1/13	DC	DC	DC	40
41	5/1/13	DC	DC	DC	41
42	5/1/13	DC	DC	DC	42
43	5/1/13	DC	DC	DC	43
44	5/1/13	DC	DC	DC	44
45	5/1/13	DC	DC	DC	45
46	5/1/13	DC	DC	DC	46
47	5/1/13	DC	DC	DC	47
48	5/1/13	DC	DC	DC	48
49	5/1/13	DC	DC	DC	49
50	5/1/13	DC	DC	DC	50
51	5/1/13	DC	DC	DC	51
52	5/1/13	DC	DC	DC	52
53	5/1/13	DC	DC	DC	53
54	5/1/13	DC	DC	DC	54
55	5/1/13	DC	DC	DC	55
56	5/1/13	DC	DC	DC	56
57	5/1/13	DC	DC	DC	57
58	5/1/13	DC	DC	DC	58
59	5/1/13	DC	DC	DC	59
60	5/1/13	DC	DC	DC	60
61	5/1/13	DC	DC	DC	61
62	5/1/13	DC	DC	DC	62
63	5/1/13	DC	DC	DC	63
64	5/1/13	DC	DC	DC	64
65	5/1/13	DC	DC	DC	65
66	5/1/13	DC	DC	DC	66
67	5/1/13	DC	DC	DC	67
68	5/1/13	DC	DC	DC	68
69	5/1/13	DC	DC	DC	69
70	5/1/13	DC	DC	DC	70
71	5/1/13	DC	DC	DC	71
72	5/1/13	DC	DC	DC	72
73	5/1/13	DC	DC	DC	73
74	5/1/13	DC	DC	DC	74
75	5/1/13	DC	DC	DC	75
76	5/1/13	DC	DC	DC	76
77	5/1/13	DC	DC	DC	77
78	5/1/13	DC	DC	DC	78
79	5/1/13	DC	DC	DC	79
80	5/1/13	DC	DC	DC	80
81	5/1/13	DC	DC	DC	81
82	5/1/13	DC	DC	DC	82
83	5/1/13	DC	DC	DC	83
84	5/1/13	DC	DC	DC	84
85	5/1/13	DC	DC	DC	85
86	5/1/13	DC	DC	DC	86
87	5/1/13	DC	DC	DC	87
88	5/1/13	DC	DC	DC	88
89	5/1/13	DC	DC	DC	89
90	5/1/13	DC	DC	DC	90
91	5/1/13	DC	DC	DC	91
92	5/1/13	DC	DC	DC	92
93	5/1/13	DC	DC	DC	93
94	5/1/13	DC	DC	DC	94
95	5/1/13	DC	DC	DC	95
96	5/1/13	DC	DC	DC	96
97	5/1/13	DC	DC	DC	97
98	5/1/13	DC	DC	DC	98
99	5/1/13	DC	DC	DC	99
100	5/1/13	DC	DC	DC	100

REVISIONS

NO.	DATE	BY	CHKD	APP'D	REV.
1	4/26/13	DC	DC	DC	1
2	5/1/13	DC	DC	DC	2
3	5/1/13	DC	DC	DC	3
4	5/1/13	DC	DC	DC	4
5	5/1/13	DC	DC	DC	5
6	5/1/13	DC	DC	DC	6
7	5/1/13	DC	DC	DC	7
8	5/1/13	DC	DC	DC	8
9	5/1/13	DC	DC	DC	9
10	5/1/13	DC	DC	DC	10
11	5/1/13	DC	DC	DC	11
12	5/1/13	DC	DC	DC	12
13	5/1/13	DC	DC	DC	13
14	5/1/13	DC	DC	DC	14
15	5/1/13	DC	DC	DC	15
16	5/1/13	DC	DC	DC	16
17	5/1/13	DC	DC	DC	17
18	5/1/13	DC	DC	DC	18
19	5/1/13	DC	DC	DC	19
20	5/1/13	DC	DC	DC	20
21	5/1/13	DC	DC	DC	21
22	5/1/13	DC	DC	DC	22
23	5/1/13	DC	DC	DC	23
24	5/1/13	DC	DC	DC	24
25	5/1/13	DC	DC	DC	25
26	5/1/13	DC	DC	DC	26
27	5/1/13	DC	DC	DC	27
28	5/1/13	DC	DC	DC	28
29	5/1/13	DC	DC	DC	29
30	5/1/13	DC	DC	DC	30
31	5/1/13	DC	DC	DC	31
32	5/1/13	DC	DC	DC	32
33	5/1/13	DC	DC	DC	33
34	5/1/13	DC	DC	DC	34
35	5/1/13	DC	DC	DC	35
36	5/1/13	DC	DC	DC	36
37	5/1/13	DC	DC	DC	37
38	5/1/13	DC	DC	DC	38
39	5/1/13	DC	DC	DC	39
40	5/1/13	DC	DC	DC	40
41	5/1/13	DC	DC	DC	41
42	5/1/13	DC	DC	DC	42
43	5/1/13	DC	DC	DC	43
44	5/1/13	DC	DC	DC	44
45	5/1/13	DC	DC	DC	45
46	5/1/13	DC	DC	DC	46
47	5/1/13	DC	DC	DC	47
48	5/1/13	DC	DC	DC	48
49	5/1/13	DC	DC	DC	49
50	5/1/13	DC	DC	DC	50
51	5/1/13	DC	DC	DC	51
52	5/1/13	DC	DC	DC	52
53	5/1/13	DC	DC	DC	53
54	5/1/13	DC	DC	DC	54
55	5/1/13	DC	DC	DC	55
56	5/1/13	DC	DC	DC	56
57	5/1/13	DC	DC	DC	57
58	5/1/13	DC	DC	DC	58
59	5/1/13	DC	DC	DC	59
60	5/1/13	DC	DC	DC	60
61	5/1/13	DC	DC	DC	61
62	5/1/13	DC	DC	DC	62
63	5/1/13	DC	DC	DC	63
64	5/1/13	DC	DC	DC	64
65	5/1/13	DC	DC	DC	65
66	5/1/13	DC	DC	DC	66
67	5/1/13	DC	DC	DC	67
68	5/1/13	DC	DC	DC	68
69	5/1/13	DC	DC	DC	69
70	5/1/13	DC	DC	DC	70
71	5/1/13	DC	DC	DC	71
72	5/1/13	DC	DC	DC	72
73	5/1/13	DC	DC	DC	73
74	5/1/13	DC	DC	DC	74
75	5/1/13	DC	DC	DC	75
76	5/1/13	DC	DC	DC	76
77	5/1/13	DC	DC	DC	77
78	5/1/13	DC	DC	DC	78
79	5/1/13	DC	DC	DC	79
80	5/1/13	DC	DC	DC	80
81	5/1/13	DC	DC	DC	81
82	5/1/13	DC	DC	DC	82
83	5/1/13	DC	DC	DC	83
84	5/1/13	DC	DC	DC	84
85	5/1/13	DC	DC	DC	85
86	5/1/13	DC	DC	DC	86
87	5/1/13	DC	DC	DC	87
88	5/1/13	DC	DC	DC	88
89	5/1/13	DC	DC	DC	89
90	5/1/13	DC	DC	DC	90
91	5/1/13	DC	DC	DC	91
92	5/1/13	DC	DC	DC	92
93	5/1/13	DC	DC	DC	93
94	5/1/13	DC	DC	DC	94
95	5/1/13	DC	DC	DC	95
96	5/1/13	DC	DC	DC	96
97	5/1/13	DC	DC	DC	97
98	5/1/13	DC	DC	DC	98
99	5/1/13	DC	DC	DC	99
100	5/1/13	DC	DC	DC	100

REVISIONS

DATE: 4/26/13
BY: DC
CHKD: DC
APP'D: DC
REV: 1

PROJECT: CAPE COD NATIONAL SEASHORE
SUBJECT: PROPOSED PLAN & SECTION
MOVE 125' INLAND OPTION

Sheet
X-102
of 102



Legend

• structures

**Elevation Contours
feet**

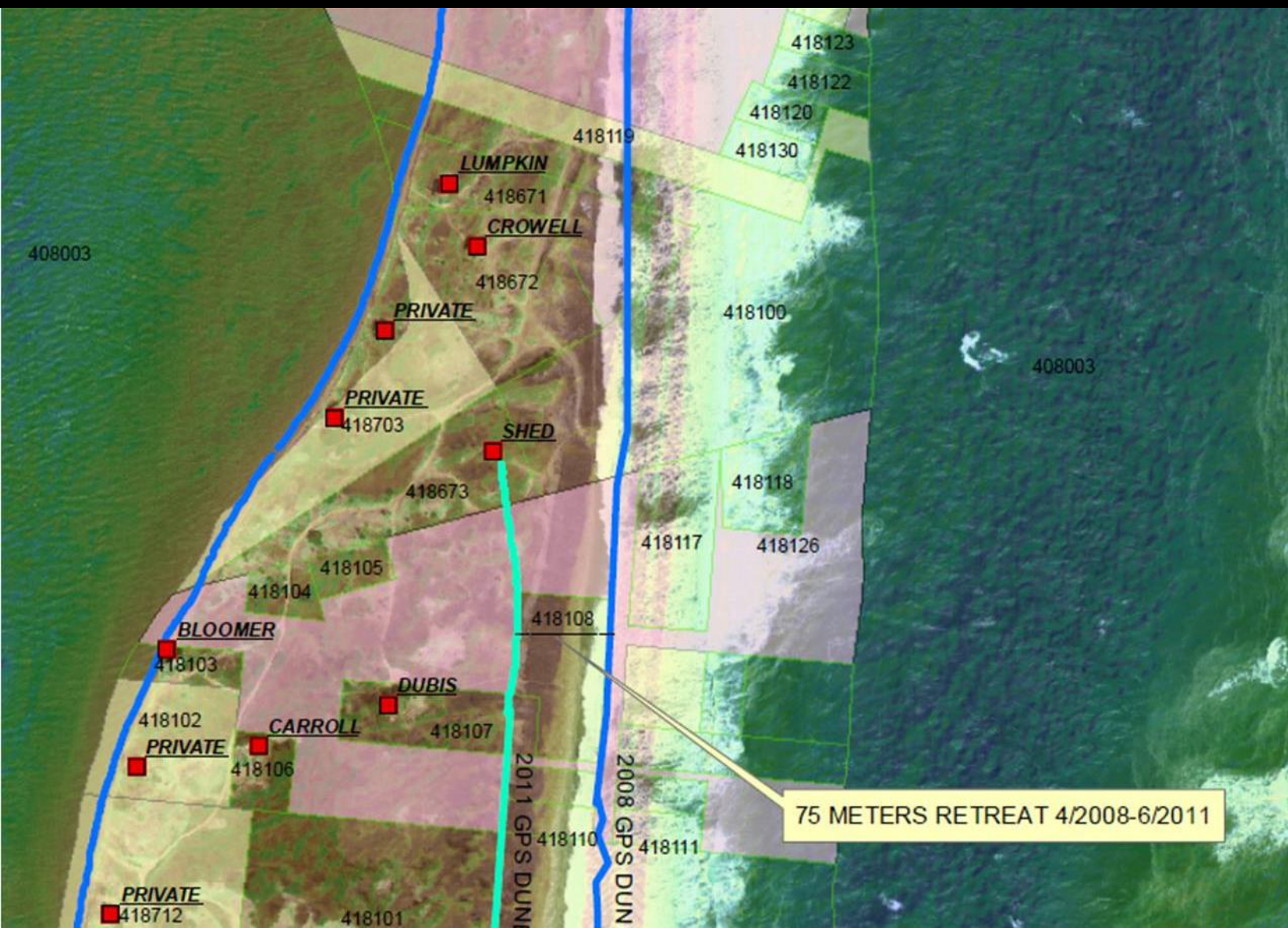
-3
0
3
7
10
13

CONTOURS: 2005

CONTOURS: 2010

CONTOURS: 2011 (Oct & Nov)

CONTOURS: 2011 (Oct & Nov)





Looking north (Bloomer).

11/09/2011



Blizzard of 1978











Cape Cod National Seashore

National Park Service
U.S. Department of the Interior

SWIMMERS AND WADERS CAUTION

DANGEROUS CURRENTS

RIP CURRENTS are strong, swift-moving channels of water rushing from the shore out to sea that can form anywhere. Look for foamy, sandy, choppy water, or water traveling seaward through an area of little wave activity. People entering shallow water can be caught in rip currents and quickly pulled out into deep water.

IF YOU ARE CAUGHT IN A RIP CURRENT:

- Stay calm.
- Swim parallel to the beach until you are out of the current, then swim toward shore with incoming waves.
- If you need assistance, wave your arms and yell for help.



SHARK ADVISORY

Great white sharks live in these waters.

Sharks prey on seals.
Avoid swimming near seals.



FOR YOUR SAFETY

- Sand collapses easily. Do not climb slopes or dig holes deeper than knee level.
- Be aware of changing tides and weather conditions.
- Watch your children at all times, and keep them within easy reach.
- Stay hydrated and avoid overexposure to the sun.
- Notify lifeguards in case of emergency.

BEACH RULES

- Fires require a permit.
- Pets must be on a leash. Pet closures may be in effect to protect shorebirds.
- Metal detectors are prohibited.
- Saltwater fishing requires a license.
- Camping is not permitted.
- Leave no trace – carry out what you bring.

RESOURCE PROTECTION

WE SHARE THE BEACH with birds and other wildlife that depend on this undeveloped shoreline for feeding, rest, and reproduction. Watch birds from a distance and follow regulations about dogs and kites. Keep wildlife wild by not feeding, and by removing food trash that attracts predators.